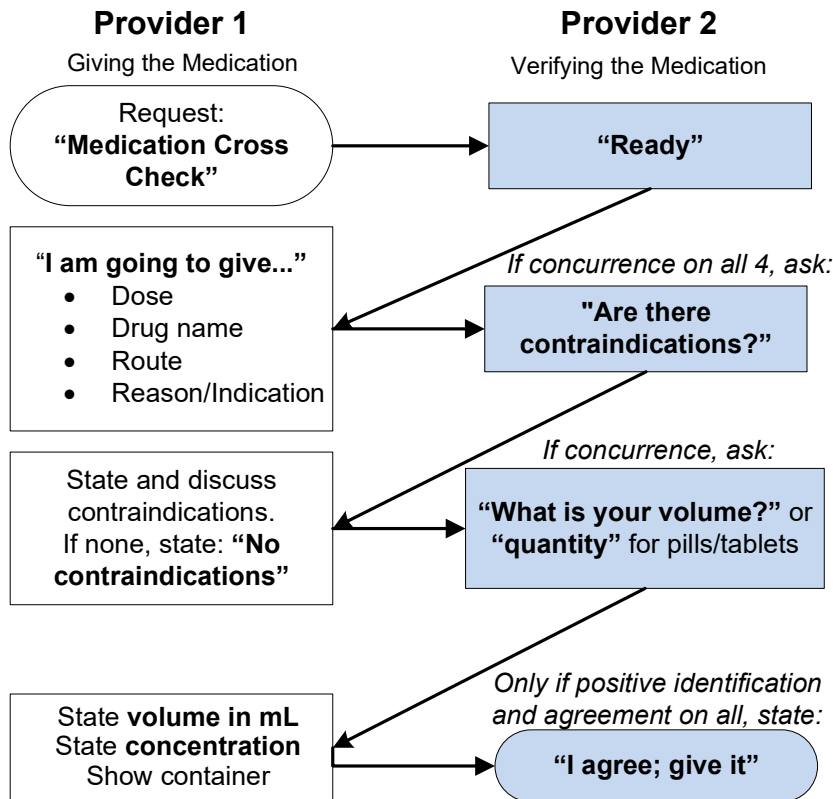




Medication Administration Cross Check



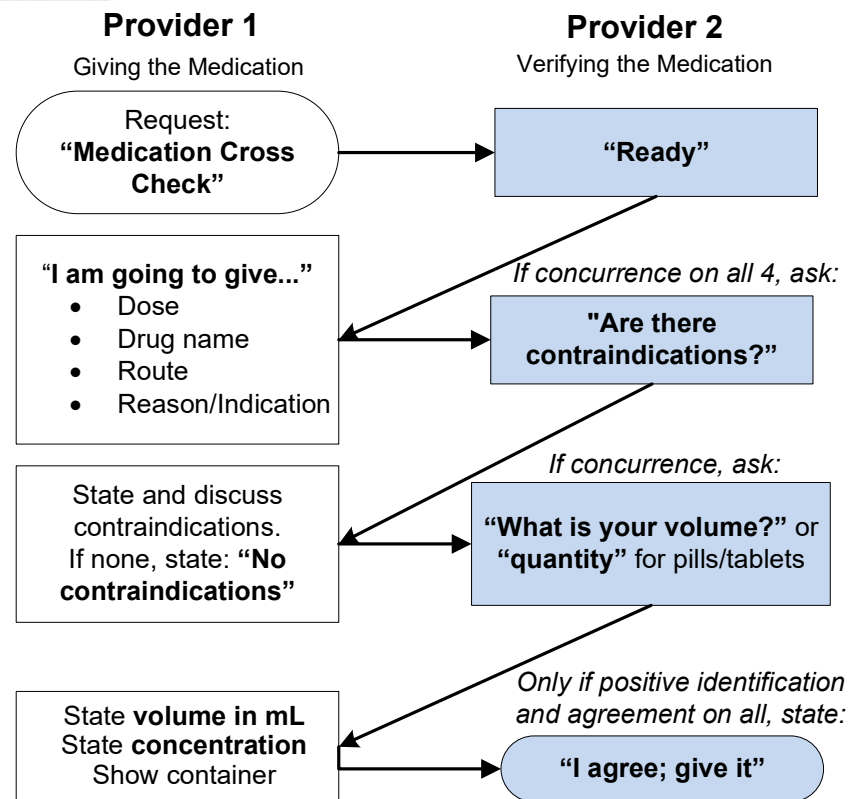
- **"Contraindications"** include: 1) verification of appropriate vital signs, 2) known patient allergies, and 3) expiration date.
- If a discrepancy, disagreement, or need for clarification is encountered at any step in the process, it must be resolved prior to continuing the cross check.
- Provider 2 can authorize the administration of the medication.
- The Medication Administration Cross Check must be completed prior to the administration of any medication when two EMS providers are available.
- If there is an interruption or change in patient condition of any kind, the process must be re-initiated by Provider 1.
- Avoid ambiguous statements or confirmations like "okay."

RED RULE of Medication Administration
(A Duty to Avoid Causing UNJUSTIFIABLE Harm)
NEVER give the contents of a syringe that is not labeled or without visualizing the vial from which it was immediately drawn.

Adapted with permission from Wichita-Sedgwick County EMS System
Approved: Region 11 EMS Medical Directors Consortium
Effective: August 1, 2022



Medication Administration Cross Check



- **"Contraindications"** include: 1) verification of appropriate vital signs, 2) known patient allergies, and 3) expiration date.
- If a discrepancy, disagreement, or need for clarification is encountered at any step in the process, it must be resolved prior to continuing the cross check.
- Provider 2 can authorize the administration of the medication.
- The Medication Administration Cross Check must be completed prior to the administration of any medication when two EMS providers are available.
- If there is an interruption or change in patient condition of any kind, the process must be re-initiated by Provider 1.
- Avoid ambiguous statements or confirmations like "okay."

RED RULE of Medication Administration
(A Duty to Avoid Causing UNJUSTIFIABLE Harm)
NEVER give the contents of a syringe that is not labeled or without visualizing the vial from which it was immediately drawn.

Adapted with permission from Wichita-Sedgwick County EMS System
Approved: Region 11 EMS Medical Directors Consortium
Effective: August 1, 2022