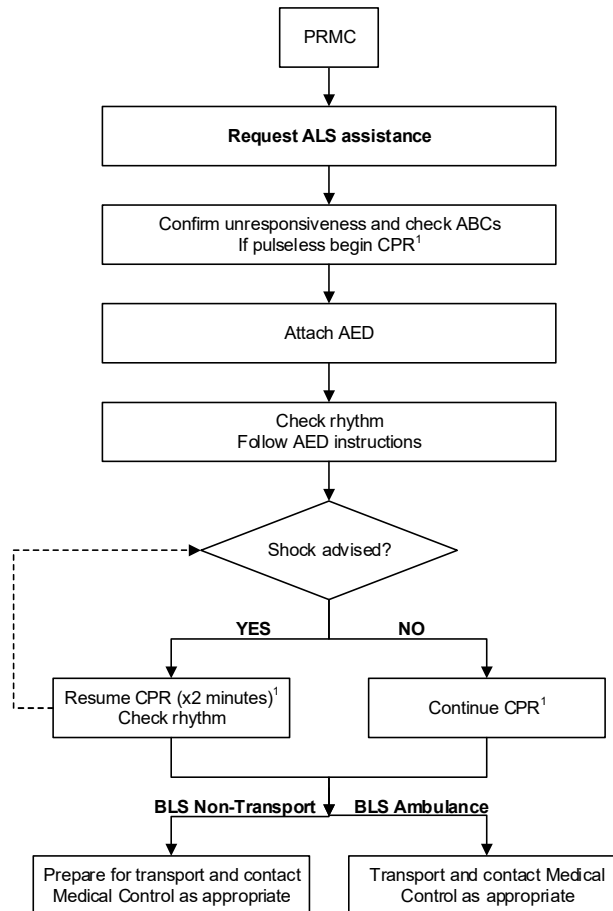




**REGION 11  
CHICAGO EMS SYSTEM  
PROTOCOL**

Title: Pediatric Cardiac Arrest - BLS
Section: Pediatrics
Approved: EMS Medical Directors Consortium
Effective: March 1, 2016

**PEDIATRIC CARDIAC ARREST - BLS**



1 – Pediatric CPR rates: 1 rescuer = 30 compressions: 2 ventilations  
2 rescuers = 15 compressions: 2 ventilations