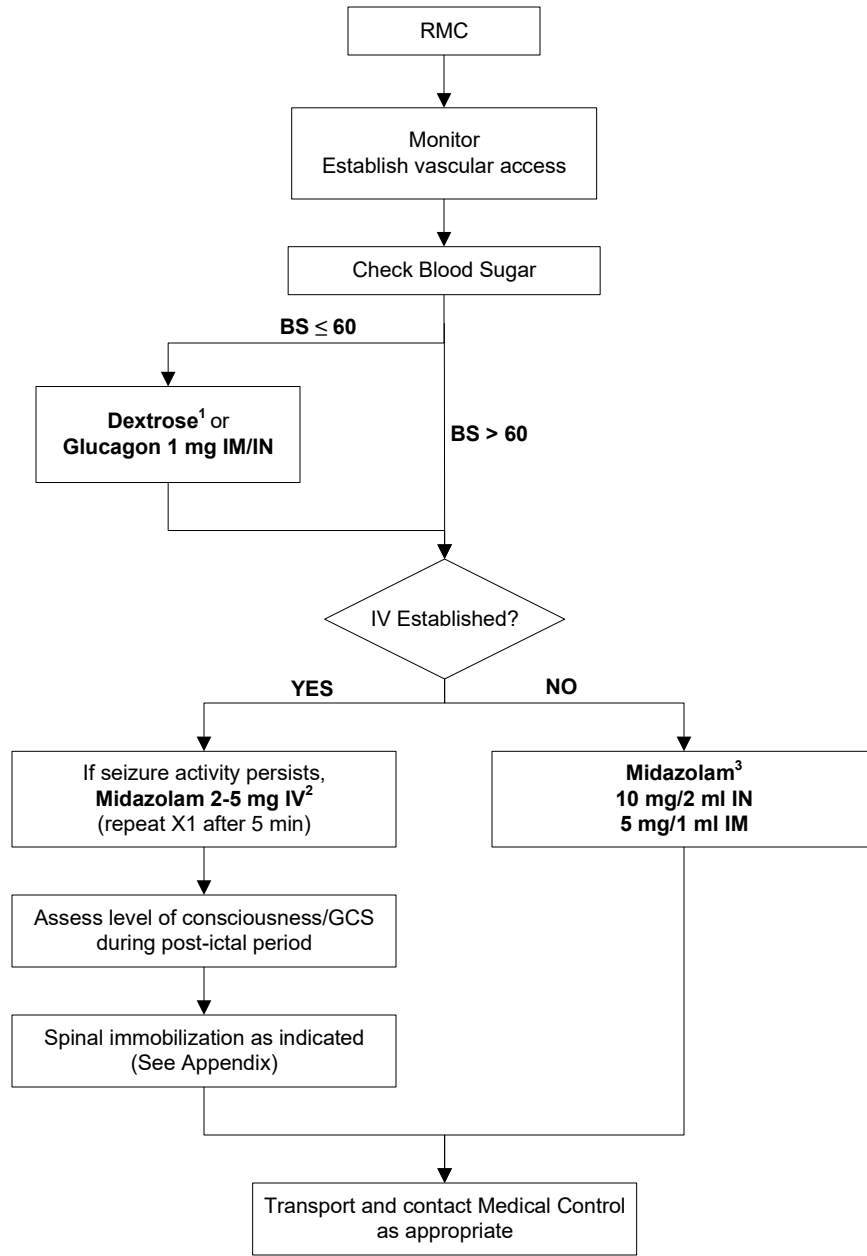


# SEIZURES - ALS



1 - Dextrose 50% 50ml IV OR

Dextrose 10% as 100ml boluses until mental status improves or BS > 60 to a maximum of 500ml

2 – Alternative to midazolam: diazepam 2-5 mg IV OR lorazepam 2 mg IV slow

3 – Alternative to midazolam: lorazepam 2 mg IM