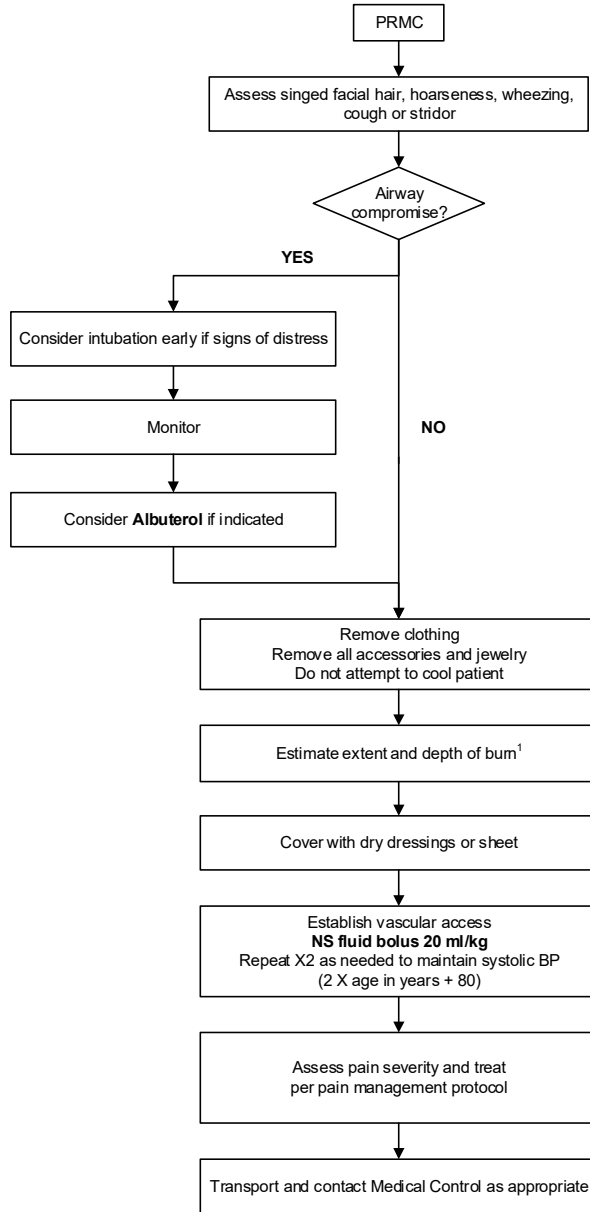




**REGION 11  
CHICAGO EMS SYSTEM  
PROTOCOL**

Title: Pediatric Burns - ALS
Section: Pediatrics
Approved: EMS Medical Directors Consortium
Effective: November 1, 2019

**PEDIATRIC BURNS - ALS**



1 – See next page for Pediatric Burns % Body Surface Area



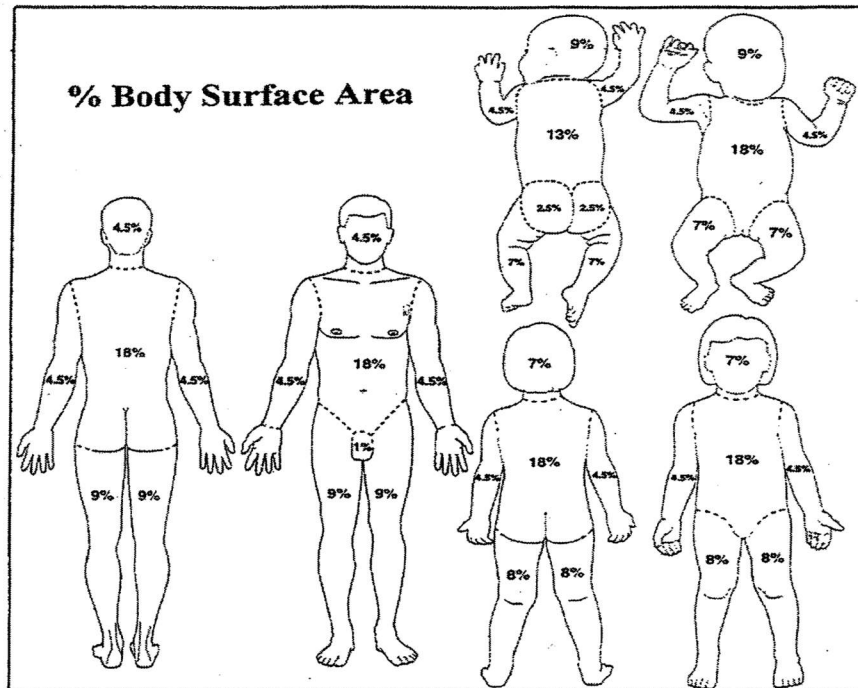
**REGION 11  
CHICAGO EMS SYSTEM  
PROTOCOL**

Title: Pediatric Burns - ALS

Section: Pediatrics

Approved: EMS Medical Directors Consortium

Effective: November 1, 2019



Palm of hand (including fingers) of infant or child = 1% of the total body surface

Any patient with a life threatening condition should be treated until stable at the nearest appropriate facility before being transferred to a burn center.