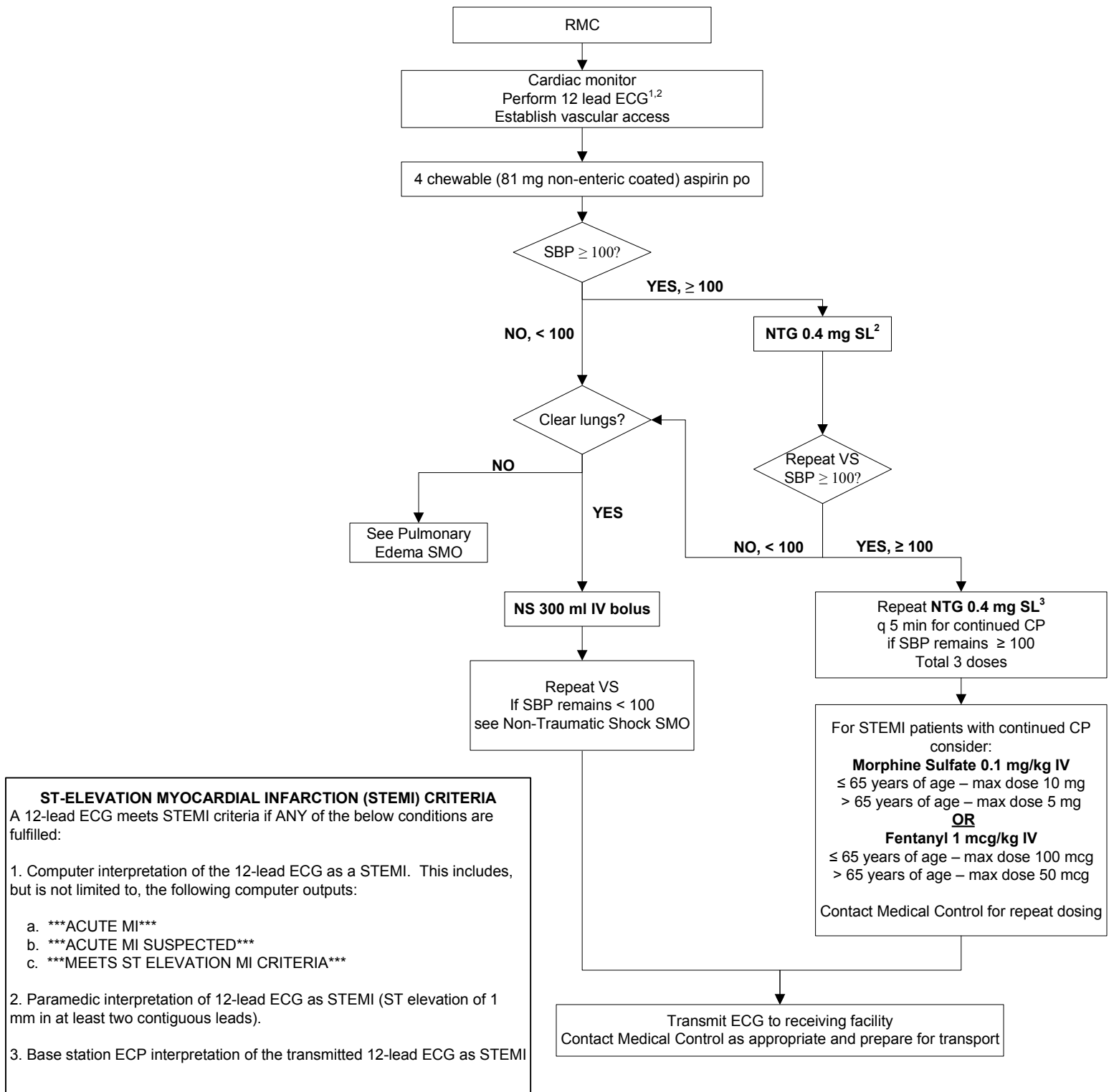


# SUSPECTED ACUTE CORONARY SYNDROME / CARDIAC CHEST PAIN - ALS



1 – If ECG shows STEMI, place defibrillation pads on patient.

2 – See ECG procedure (ALS Appendix I-15)

3 - Contact Medical Control before administration of nitroglycerin in patients with concern for inferior wall myocardial infarctions or recent use of erectile dysfunction medications such as sildenafil (Viagra), tadalafil (Cialis), or vardenafil (Levitra)