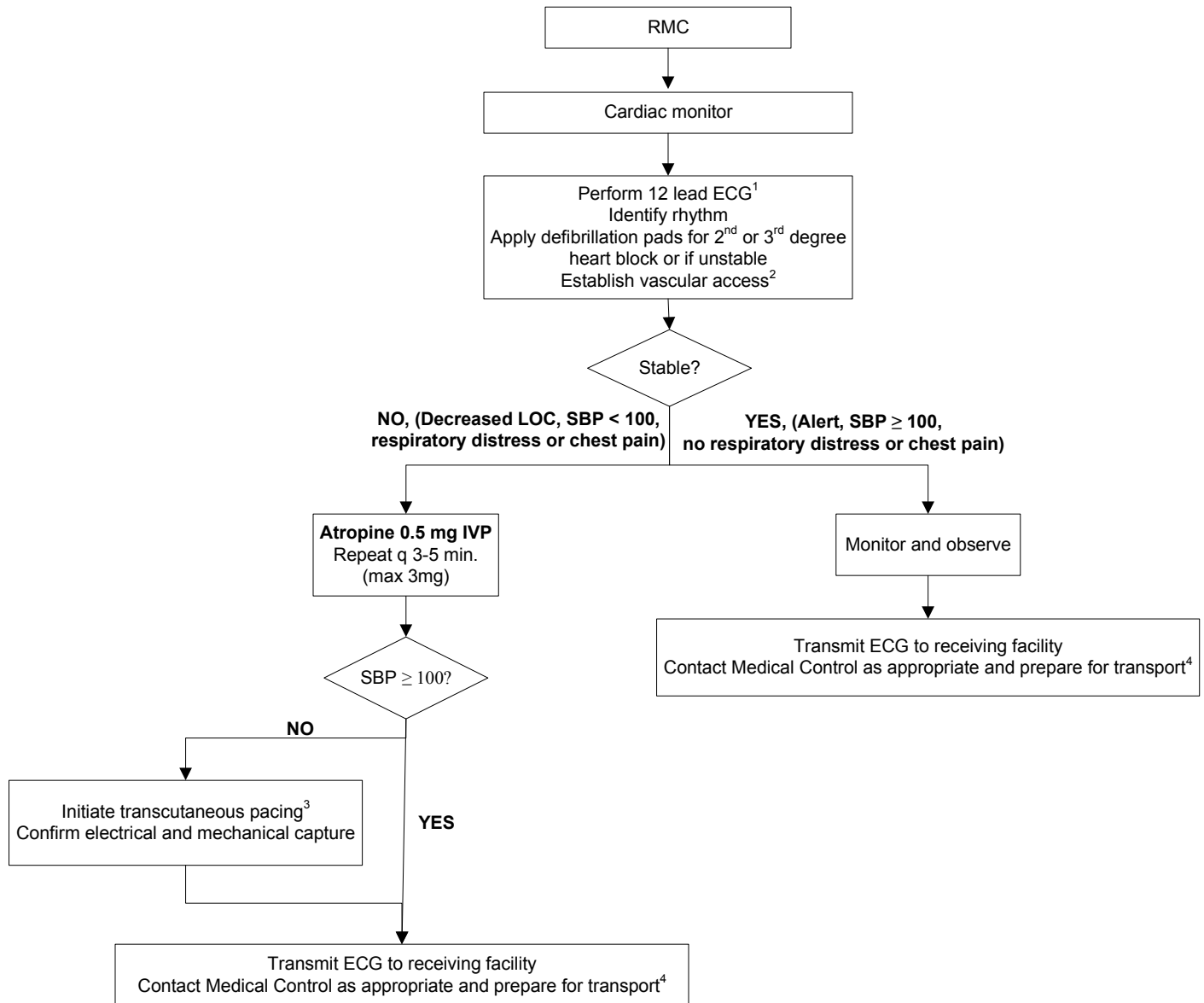


BRADYCARDIA WITH PULSE - ALS (Pulse <50)



1 – See ECG procedure (ALS Appendix I-15)

2 – If unconscious/unstable, defer vascular access until transcutaneous pacing is initiated.

3 – See Transcutaneous Pacing procedure (ALS Appendix I-14)

4 – Transport to STEMI Center if high grade AV block (2nd or 3rd degree) or if patient requires transcutaneous pacing

• Hypoxia is a common cause of bradycardia. Initial evaluation should focus on signs of increased work of breathing and treatment should be directed at improving oxygenation with supplemental oxygen and, if necessary, BVM ventilation.