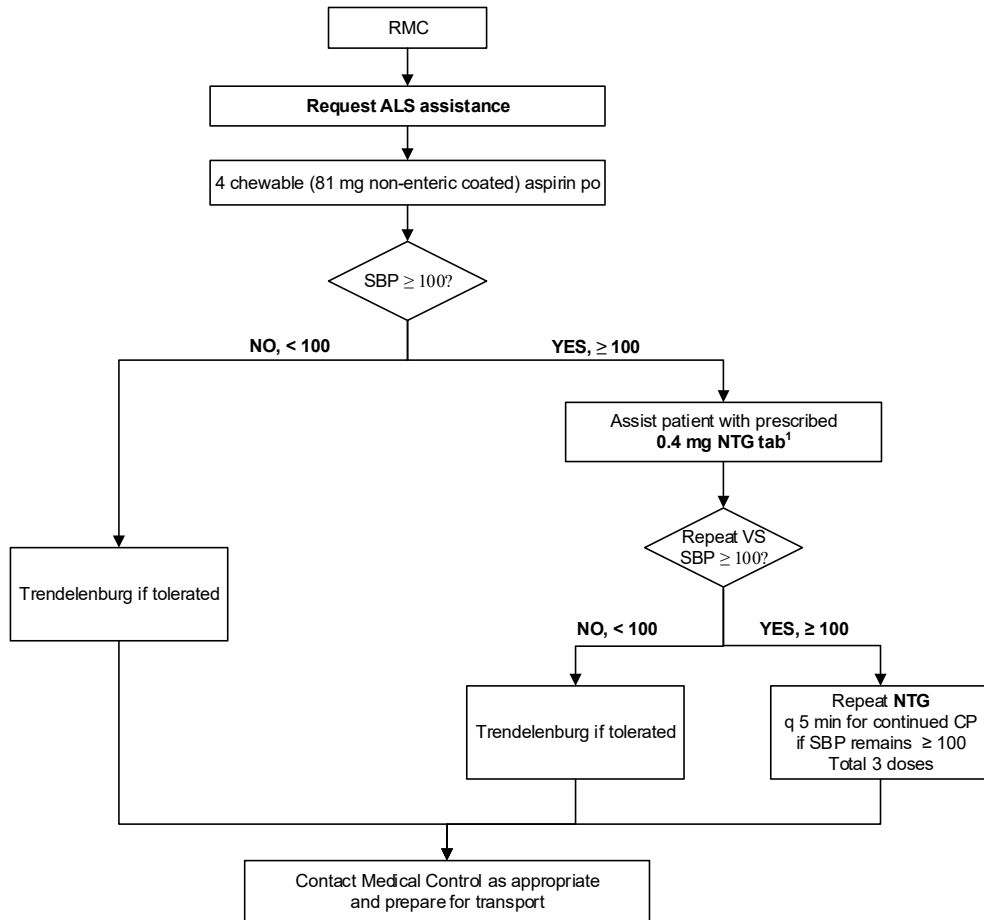




<p style="text-align: center;">REGION 11 CHICAGO EMS SYSTEM PROTOCOL</p>	Title: Acute Coronary Syndrome / Cardiac Chest Pain - BLS
	Section: Cardiovascular
	Approved: EMS Medical Directors Consortium
	Effective: January 18, 2019

ACUTE CORONARY SYNDROME / CARDIAC CHEST PAIN - BLS



1 – Contact Medical Control before administration of nitroglycerin in patients with recent use of erectile dysfunction medications such as sildenafil (Viagra), tadalafil (Cialis), or vardenafil (Levitra)