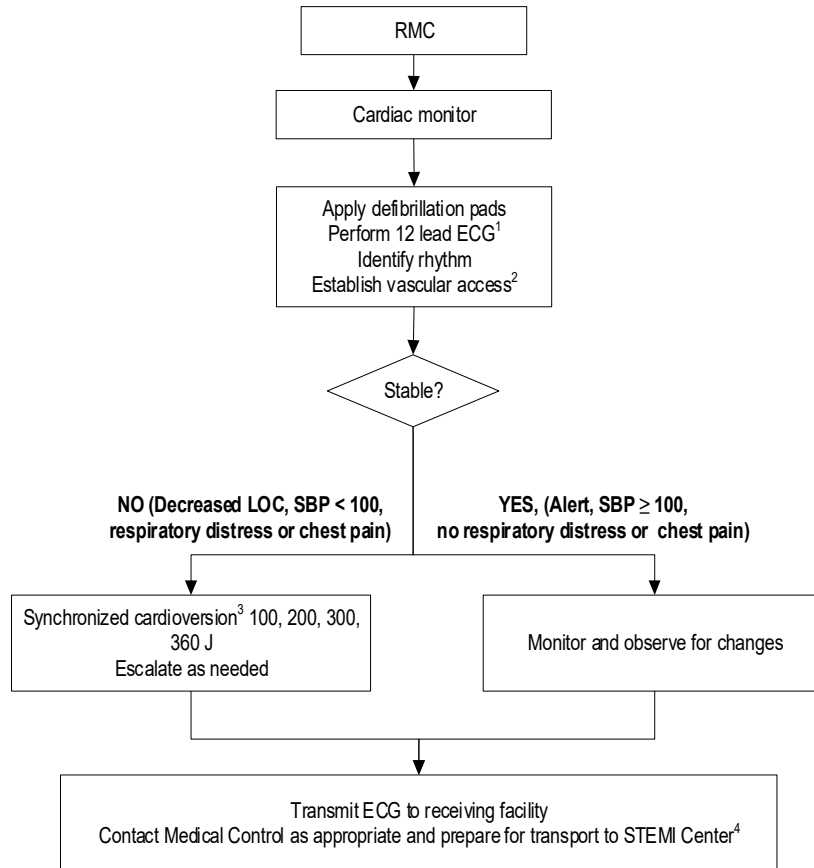




<b>REGION 11 CHICAGO EMS SYSTEM PROTOCOL</b>	Title: Wide Complex Tachycardia with Pulse - ALS
	Section: Cardiovascular
	Approved: EMS Medical Directors Consortium
	Effective: August 1, 2022

## WIDE COMPLEX TACHYCARDIA WITH PULSE - ALS



1 - See 12 Lead Electrocardiogram (ECG) procedure

2 - If unconscious/unstable, defer vascular access until after cardioversion.

3 - If conscious, consider analgesia prior to cardioversion: Fentanyl 1 mcg/kg IVP  
 ≤ 65 years of age - max dose 100 mcg  
 > 65 years of age - max dose 50 mcg

4 - All patients with wide complex tachycardia should be transported to a STEMI Center

- For renal patients with suspected hyperkalemia, consider: Calcium Chloride 1 AMP IV/IO (10 ml of 10% solution)  
Sodium Bicarb 1 AMP IV/IO (50 ml [50 mEq] of 8.4% solution)
- For suspected tricyclic antidepressant overdose consider: Sodium Bicarb 1 AMP IV/IO (50 ml [50 mEq] of 8.4% solution)