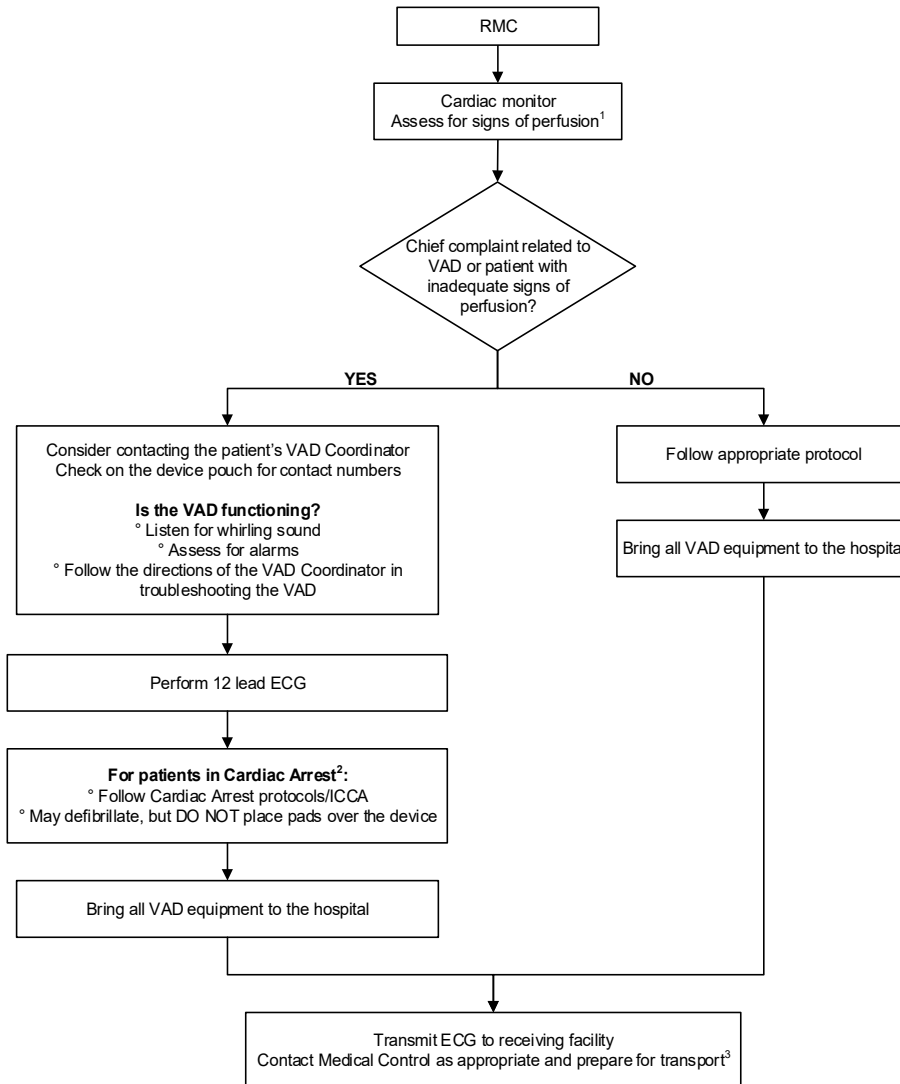




<b>REGION 11 CHICAGO EMS SYSTEM PROTOCOL</b>	Title: Ventricular Assist Device (VAD) - ALS
	Section: Cardiovascular
	Approved: EMS Medical Directors Consortium
	Effective: January 18, 2019

### VENTRICULAR ASSIST DEVICE (VAD) - ALS



1 – Patients with a Ventricular Assist Device (VAD) often do not have a peripheral pulse, O2 saturation, or a palpable blood pressure. Use other indicators of adequate perfusion such as mental status, skin color and condition, and respiratory rate and effort.

2 - Unresponsive and apneic with no signs of life

3 – Refer to Transport of Patients with a Ventricular Assist Device (VAD) policy