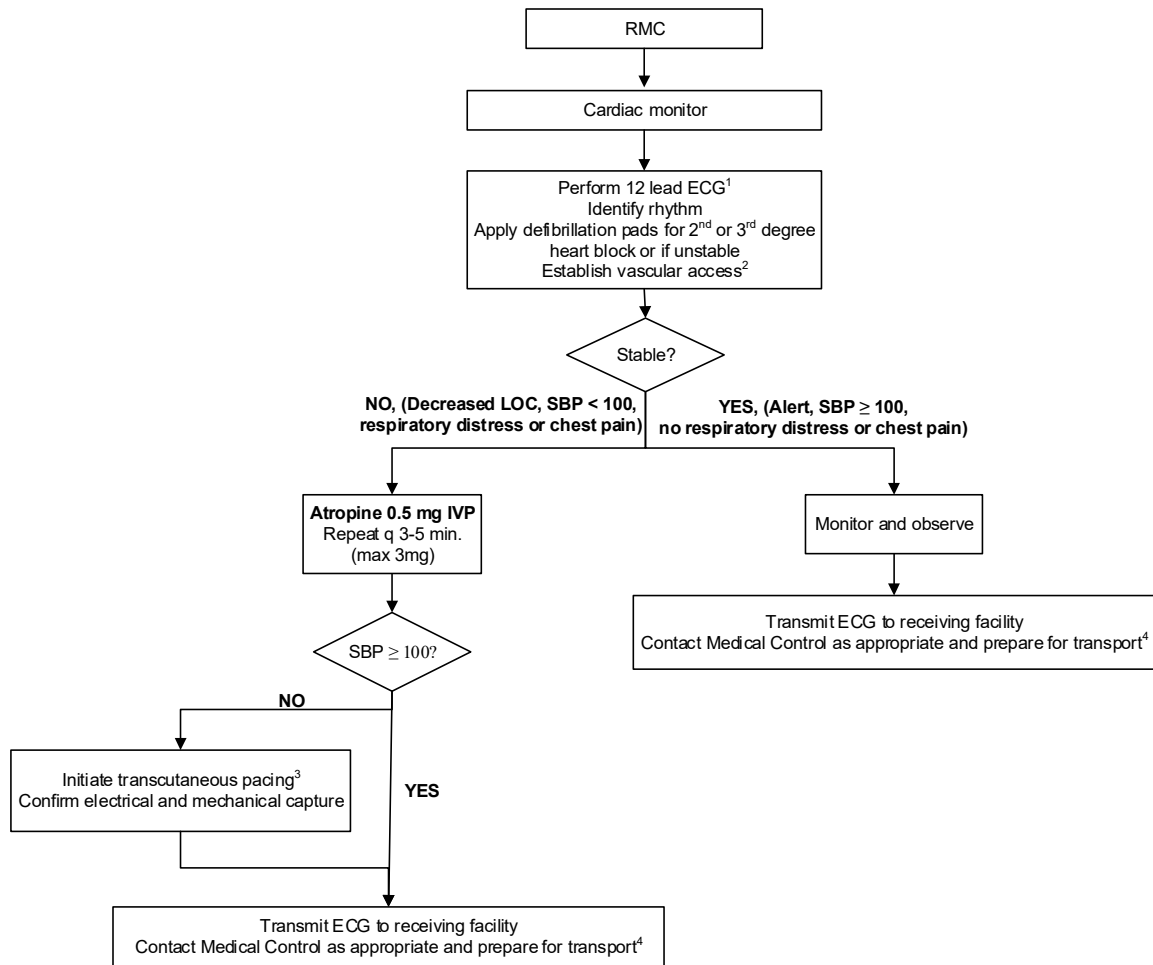




REGION 11 CHICAGO EMS SYSTEM PROTOCOL	Title: Bradycardia with Pulse - ALS
	Section: Cardiovascular
	Approved: EMS Medical Directors Consortium
	Effective: January 18, 2019

BRADYCARDIA WITH PULSE - ALS (Pulse <50)



1 – See **12 Lead Electrocardiogram (ECG)** procedure

2 – If unconscious/unstable, defer vascular access until transcutaneous pacing is initiated.

3 – See **Transcutaneous Pacing** procedure

4 – Transport to STEMI Center if high grade AV block (2nd or 3rd degree) or if patient requires transcutaneous pacing

• Hypoxia is a common cause of bradycardia. Initial evaluation should focus on signs of increased work of breathing and treatment should be directed at improving oxygenation with supplemental oxygen and, if necessary, BVM ventilation.