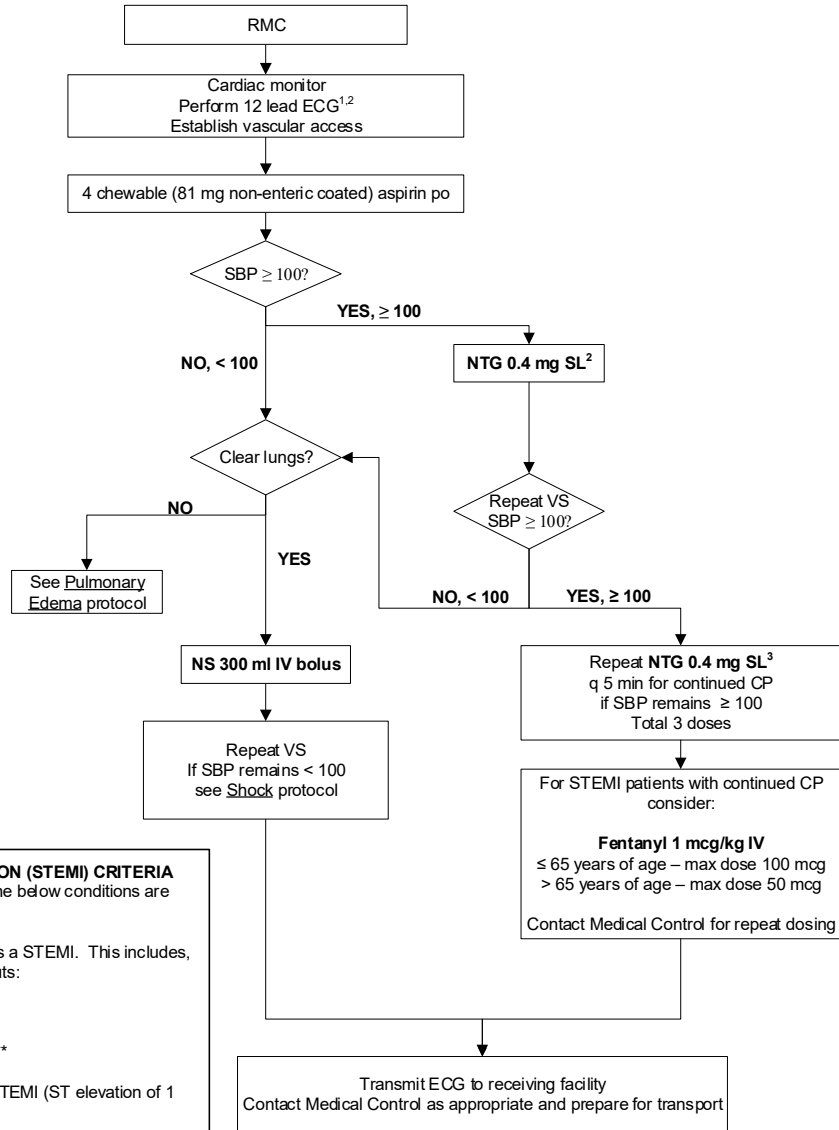




REGION 11 CHICAGO EMS SYSTEM PROTOCOL	Title: Acute Coronary Syndrome / Cardiac Chest Pain - ALS
	Section: Cardiovascular
	Approved: EMS Medical Directors Consortium
	Effective: August 1, 2022

ACUTE CORONARY SYNDROME / CARDIAC CHEST PAIN - ALS



ST-ELEVATION MYOCARDIAL INFARCTION (STEMI) CRITERIA
 A 12-lead ECG meets STEMI criteria if ANY of the below conditions are fulfilled:

- Computer interpretation of the 12-lead ECG as a STEMI. This includes, but is not limited to, the following computer outputs:
 - ***ACUTE MI***
 - ***ACUTE MI SUSPECTED***
 - ***MEETS ST ELEVATION MI CRITERIA***
- Paramedic interpretation of 12-lead ECG as STEMI (ST elevation of 1 mm in at least two contiguous leads).
- Base station ECP interpretation of the transmitted 12-lead ECG as STEMI

- 1 – If ECG shows STEMI, place defibrillation pads on patient.
- 2 – See 12 Lead Electrocardiogram (ECG) procedure
- 3 - Contact Medical Control before administration of nitroglycerin in patients with concern for inferior wall myocardial infarctions or recent use of erectile dysfunction medications such as sildenafil (Viagra), tadalafil (Cialis), or vardenafil (Levitra)