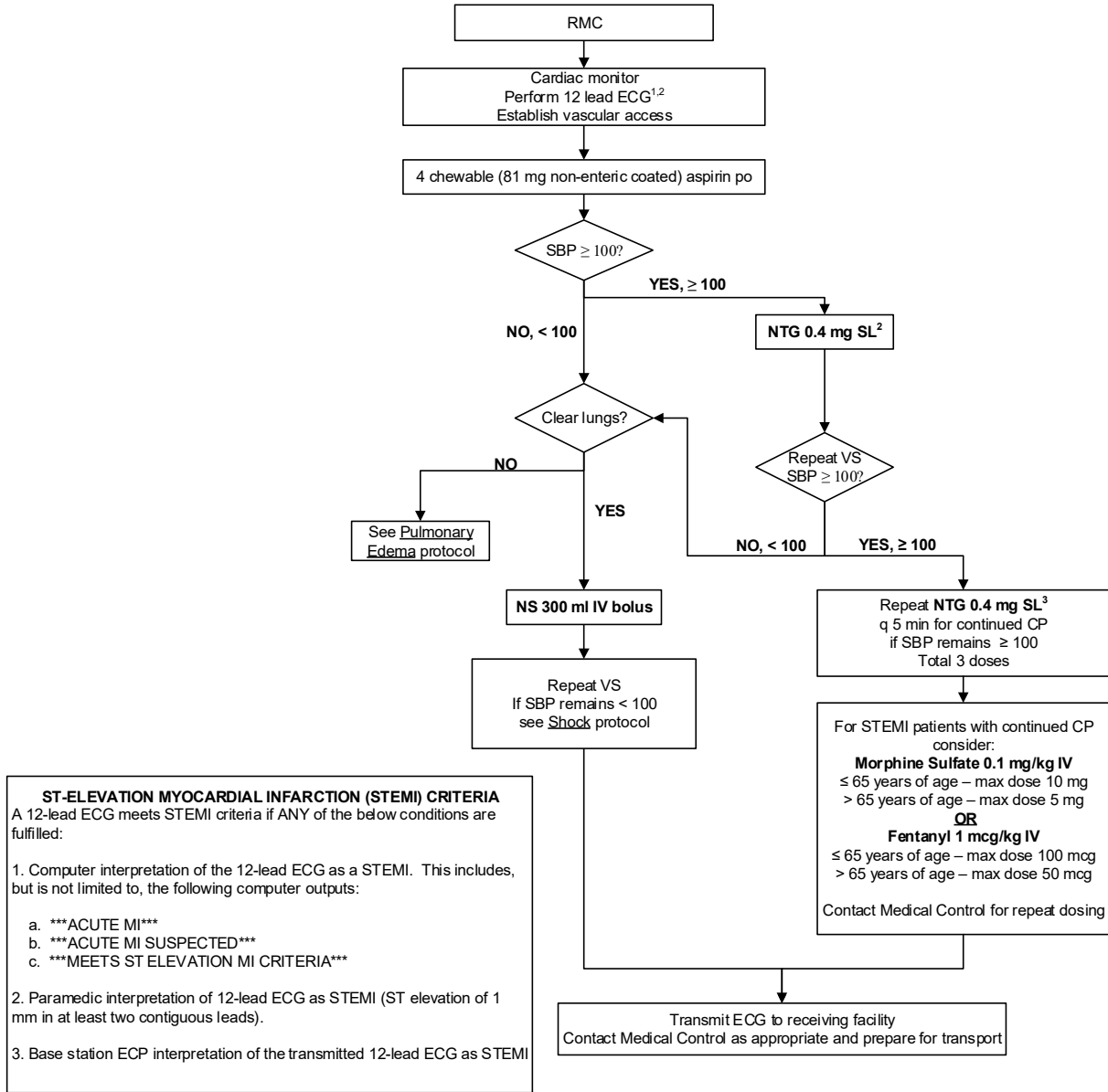




REGION 11 CHICAGO EMS SYSTEM PROTOCOL	Title: Acute Coronary Syndrome / Cardiac Chest Pain - ALS
	Section: Cardiovascular
	Approved: EMS Medical Directors Consortium
	Effective: January 18, 2019

ACUTE CORONARY SYNDROME / CARDIAC CHEST PAIN - ALS



- 1 – If ECG shows STEMI, place defibrillation pads on patient.
- 2 – See 12 Lead Electrocardiogram (ECG) procedure
- 3 - Contact Medical Control before administration of nitroglycerin in patients with concern for inferior wall myocardial infarctions or recent use of erectile dysfunction medications such as sildenafil (Viagra), tadalafil (Cialis), or vardenafil (Levitra)