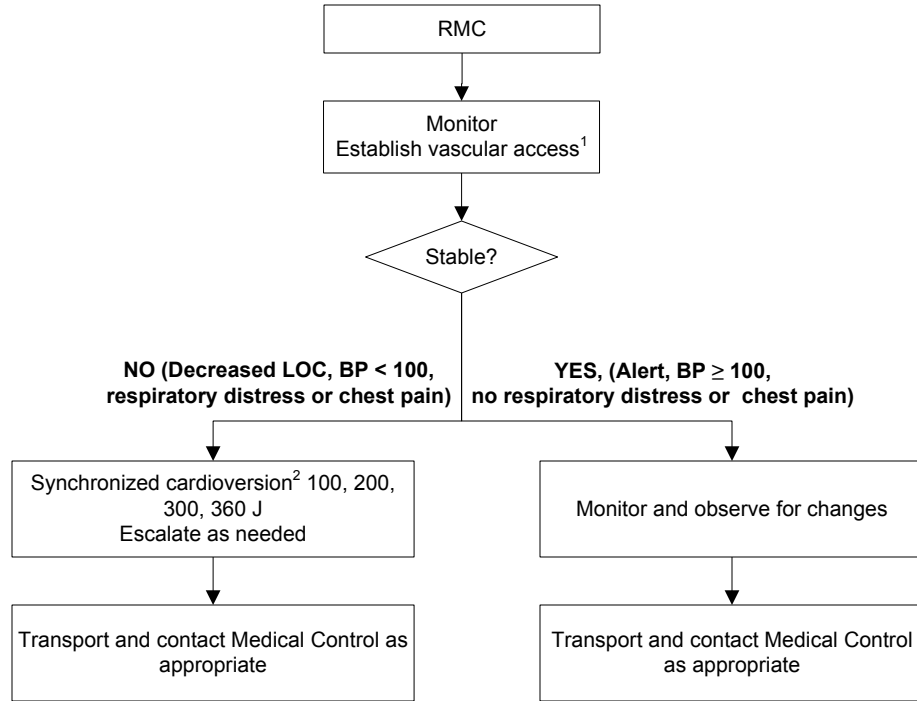


WIDE COMPLEX TACHYCARDIA WITH PULSE - ALS



1 - If unconscious, defer vascular access until after cardioversion.

2 – If conscious, consider sedation and/or analgesia prior to cardioversion: Versed 1-2 mg IVP OR Morphine Sulfate 2-5 mg IVP

*** - For Renal Patients: Consider: 1 amp Calcium Chloride IVP
1 amp Sodium Bicarbonate IVP**