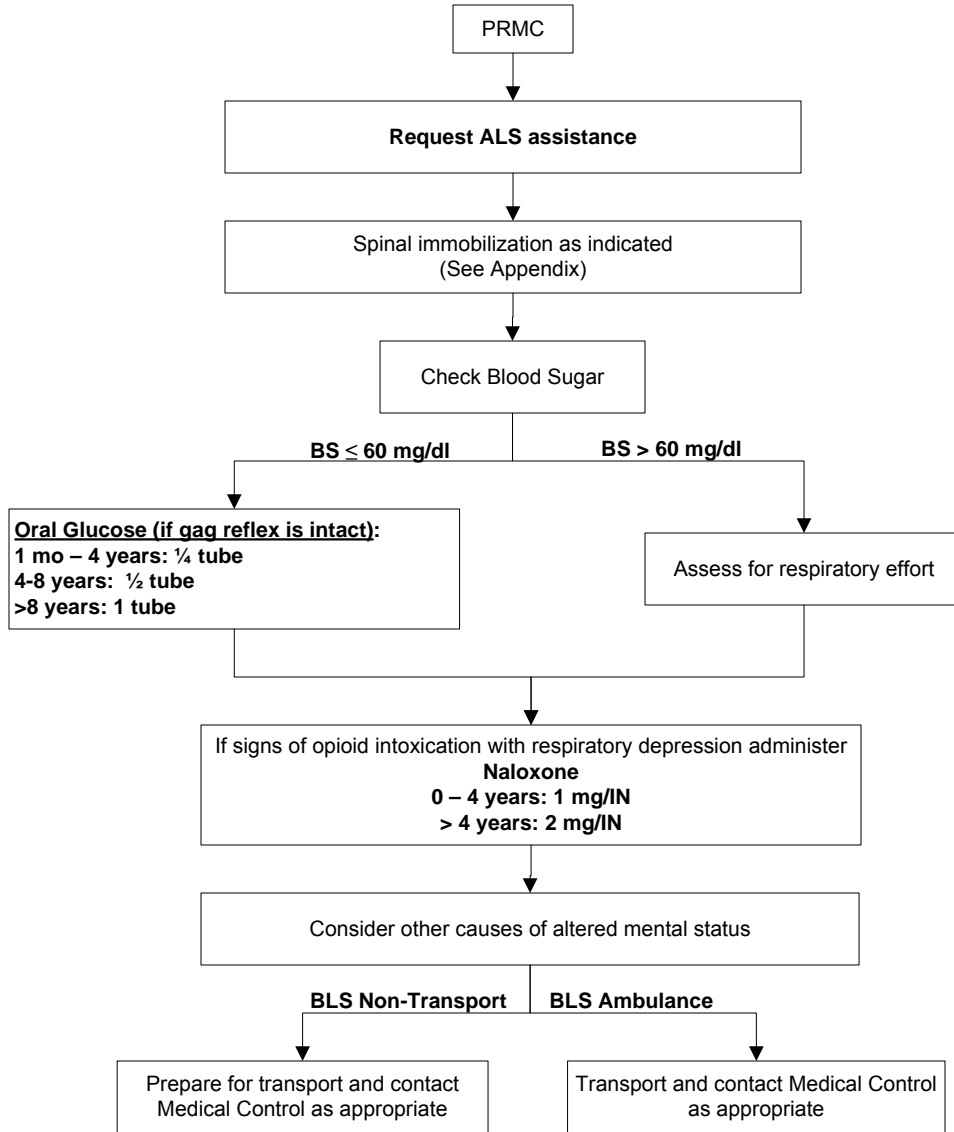


ALTERED MENTAL STATUS - PEDIATRIC - BLS



Special Considerations:

Consider causes:

- | | |
|---|--|
| A Alcohol, abuse | T Trauma, temperature |
| E Epilepsy, electrolytes, encephalopathy | I Infection, intussusception, inborn errors |
| I Insulin | P Psychogenic |
| O Opiates, overdose | P Poison |
| U Uremia | S Shock, seizures, stroke, space-occupying lesion, subarachnoid hemorrhage, shunt |