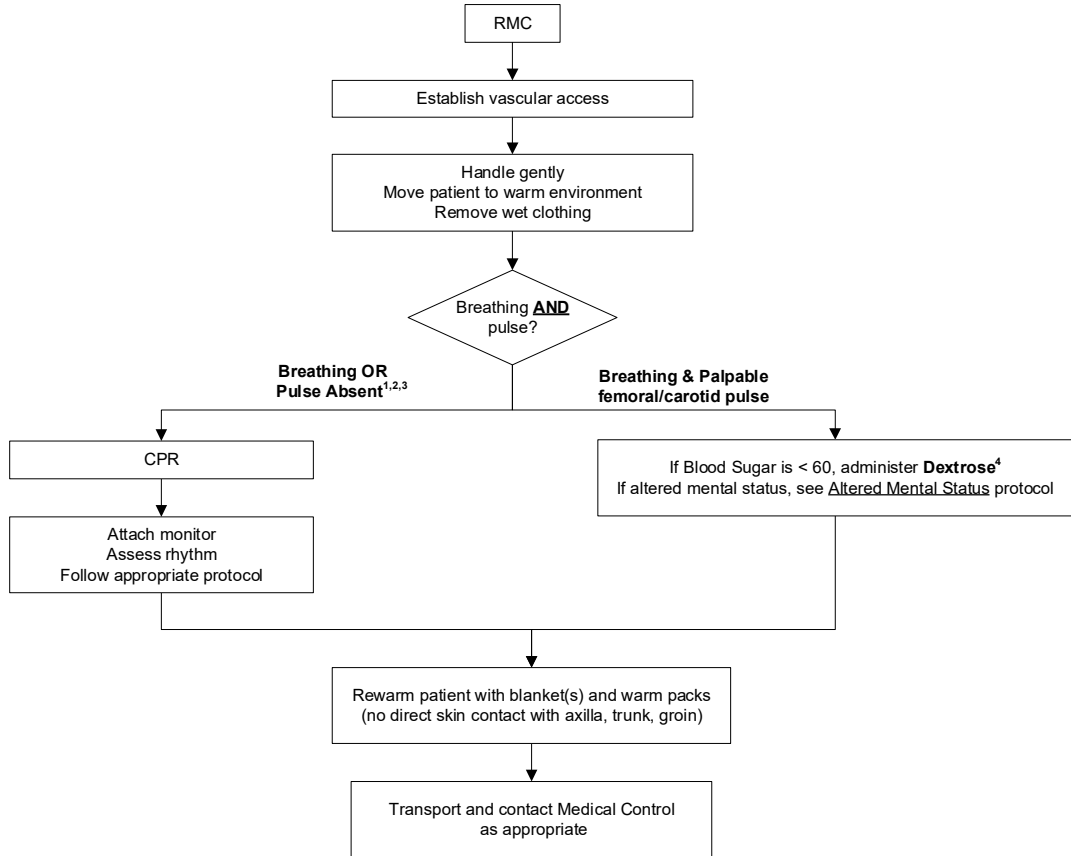




REGION 11 CHICAGO EMS SYSTEM PROTOCOL	Title: Hypothermia / Cold Exposure - ALS
	Section: Toxins and Environmental
	Approved: EMS Medical Directors Consortium
	Effective: August 1, 2022

HYPOTHERMIA / COLD EXPOSURE - ALS



1 - May present with altered sensorium or unconscious. Heart more susceptible to dysrhythmias. May have apnea, dusky or cyanotic appearance, fixed and dilated pupils; may appear without signs of life.
 2 - An individual in a frozen state is not considered salvageable.
 3 - The suspected hypothermic patient shall never be declared dead in the field.
 4 - Dextrose 10% as 100ml boluses until mental status improves or BS > 60 to a maximum of 500ml