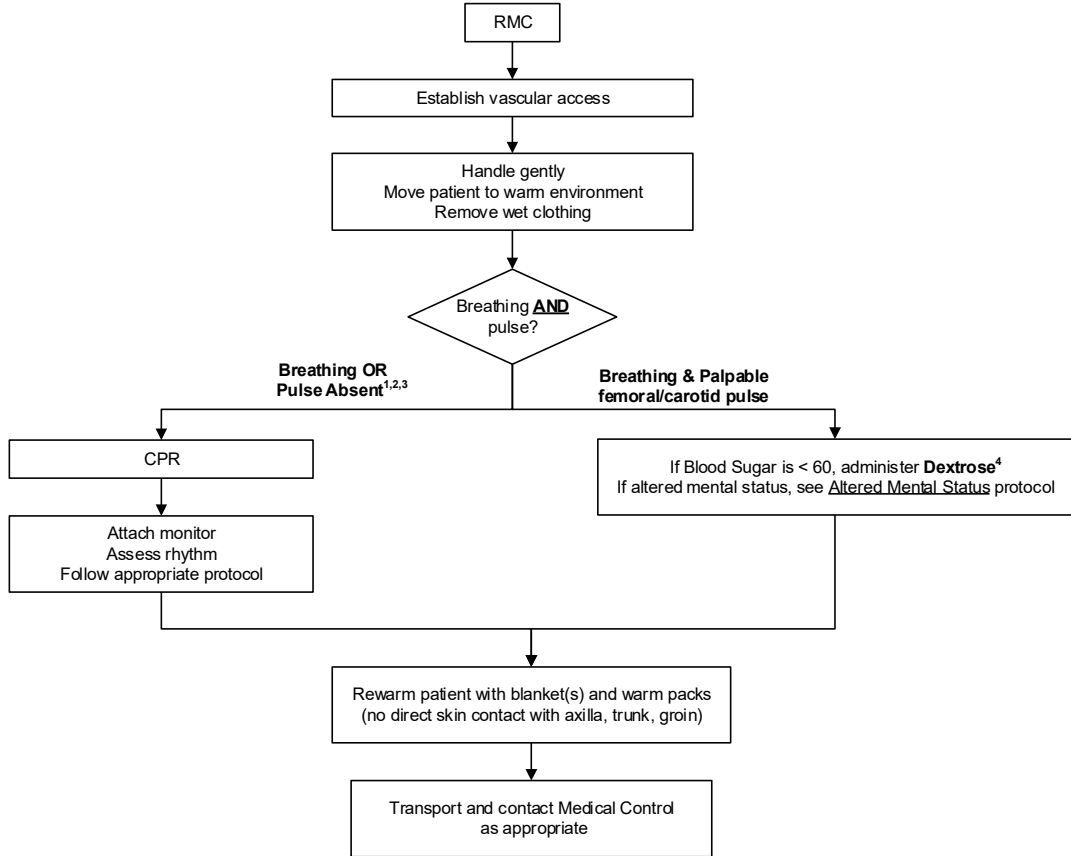




<b>REGION 11 CHICAGO EMS SYSTEM PROTOCOL</b>	Title: Hypothermia / Cold Exposure - ALS
	Section: Toxins and Environmental
	Approved: EMS Medical Directors Consortium
	Effective: October 17, 2016

### HYPOTHERMIA / COLD EXPOSURE - ALS



- 1 - May present with altered sensorium or unconscious. Heart more susceptible to dysrhythmias. May have apnea, dusky or cyanotic appearance, fixed and dilated pupils; may appear without signs of life.
- 2 - An individual in a frozen state is not considered salvageable.
- 3 - The suspected hypothermic patient shall never be declared dead in the field.
- 4 - Dextrose 50% 50ml IV OR  
Dextrose 10% as 100ml boluses until mental status improves or BS > 60 to a maximum of 500ml