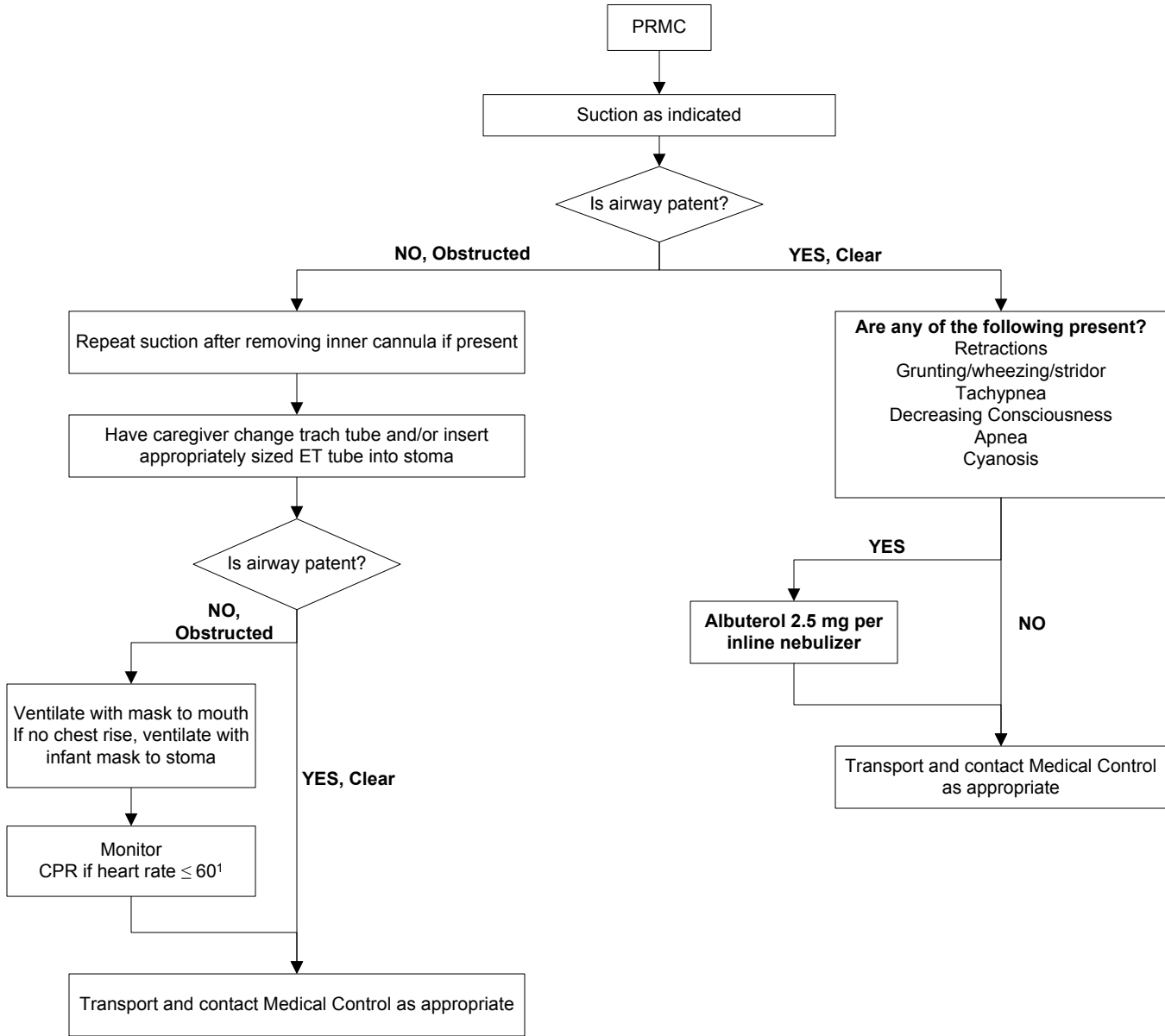


# TRACHEOSTOMY WITH RESPIRATORY DISTRESS - PEDIATRIC - ALS



**NOTE: If chest raise inadequate using mask to stoma, consider depressing pop-off valve or switching to an adult bag to increase volume and pressure.**

**1 – Pediatric CPR rates: 1 rescuer = 30 compressions: 2 ventilations  
2 rescuers = 15 compressions: 2 ventilations**