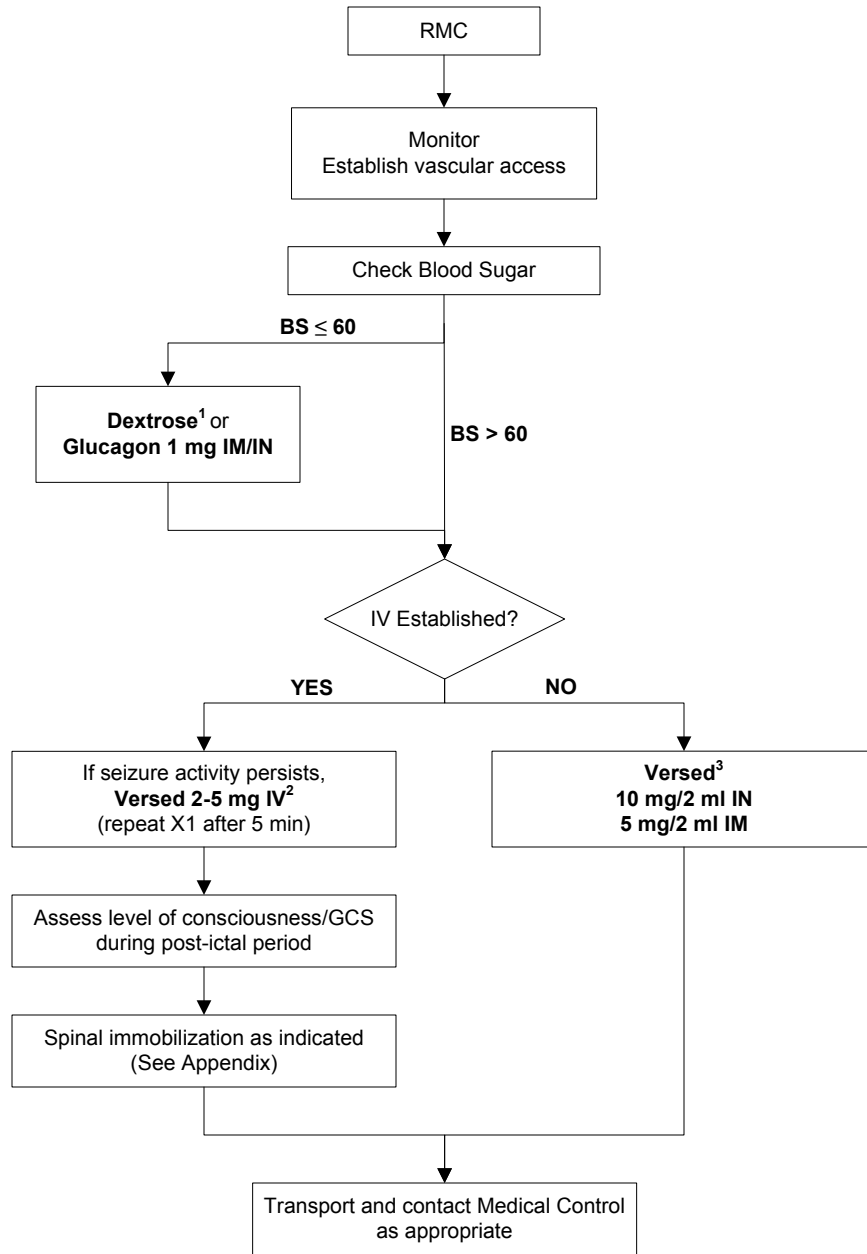


# SEIZURES - ALS



**1 - Dextrose 50% 50ml IV OR**  
**Dextrose 10% as 100ml boluses until mental status improves or BS > 60 to a maximum of 500ml**

**2 – Alternative to Versed: Valium 2-5 mg IV OR Ativan 2 mg IV slow**

**3 – Alternative to Versed: Ativan 2 mg IM**