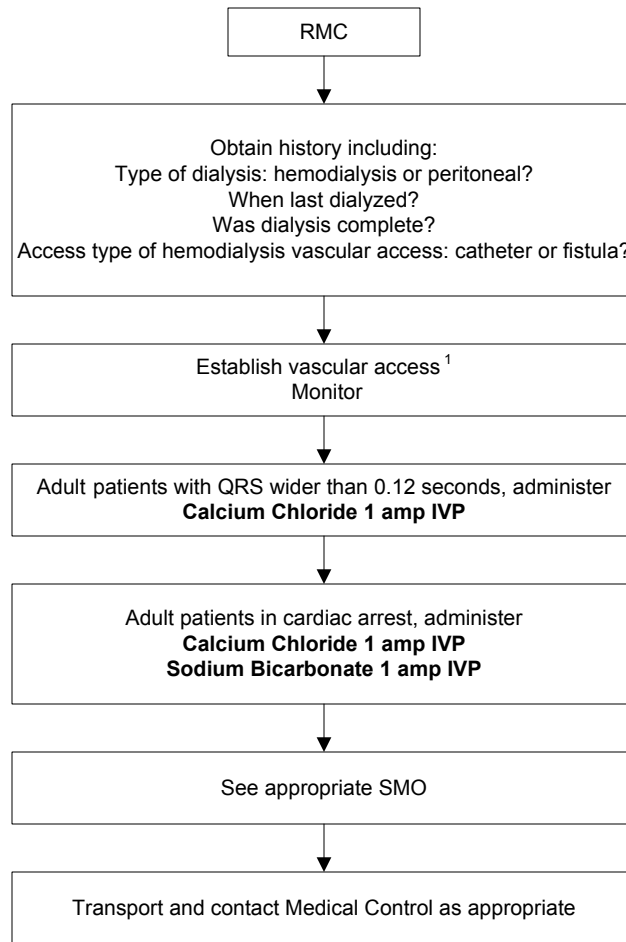


RENAL PATIENTS - ALS

Patients with Chronic Renal Failure and Receiving Hemodialysis or Peritoneal Dialysis



1 - Vascular access should not be attempted in same extremity having a functioning fistula. Fluids should be administered cautiously. If vascular access is needed emergently and a peripheral IV cannot be obtained, a functioning dialysis catheter can be used when in place by attaching IV tubing to the port