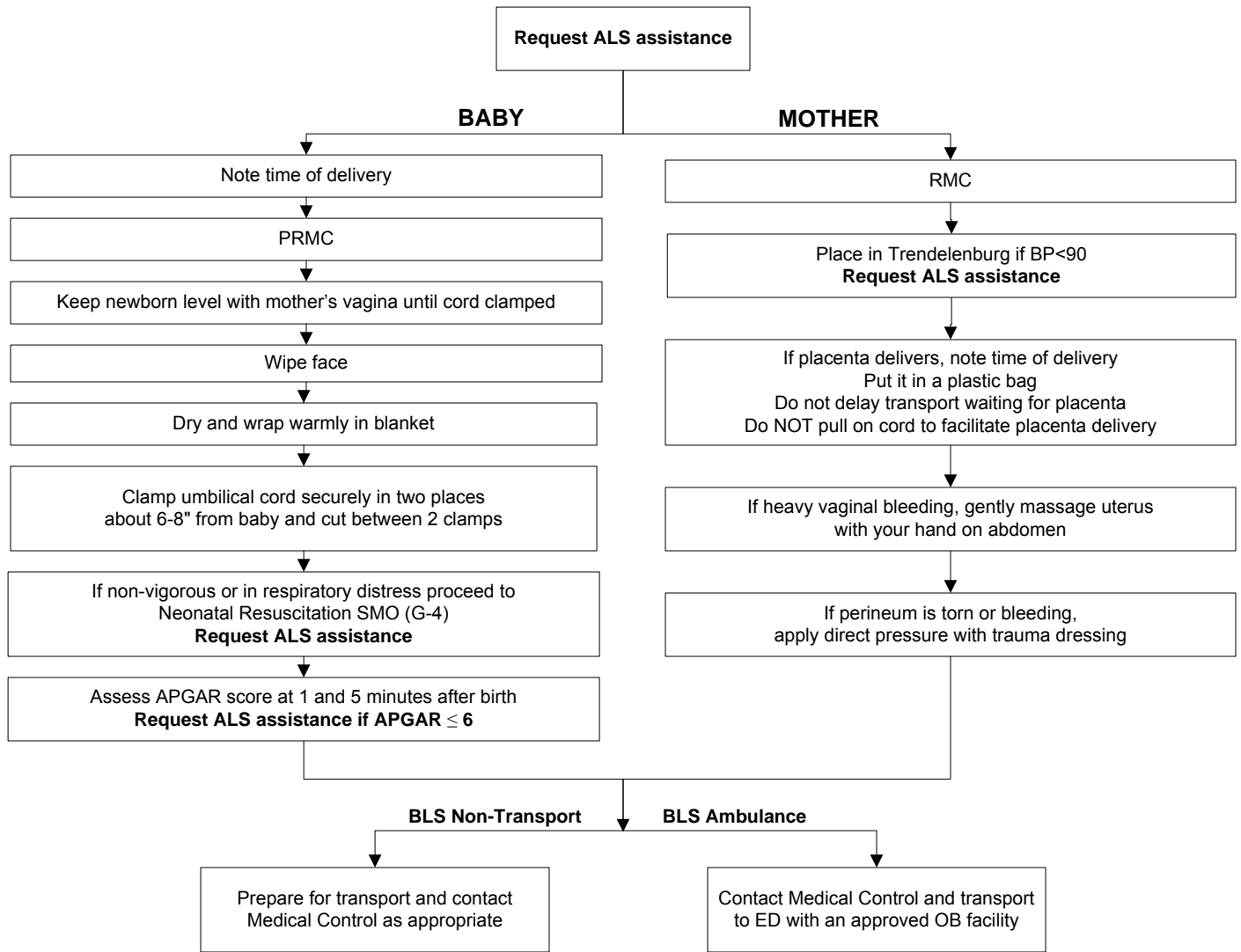


# POSTPARTUM CARE - BLS



<b>APGAR SCORING</b>					
	<b>0</b>	<b>1</b>	<b>2</b>	<b>1 Min</b>	<b>5 Min</b>
<b>A</b> =Appearance (color)	Blue, pale	Blue hands and feet	Entirely pink	_____	_____
<b>P</b> =Pulse (heart rate)	Absent	<100/min	≥100/min	_____	_____
<b>G</b> =Grimace (reflex irritability)	No response	Grimace	Cough or sneeze	_____	_____
<b>A</b> =Activity (muscle tone)	Limp	Some flexion of extremities	Active motion	_____	_____
<b>R</b> =Respiratory effort	Absent	Weak cry, hypoventilation	Good, strong cry	_____	_____
			<b>TOTALS =</b>		