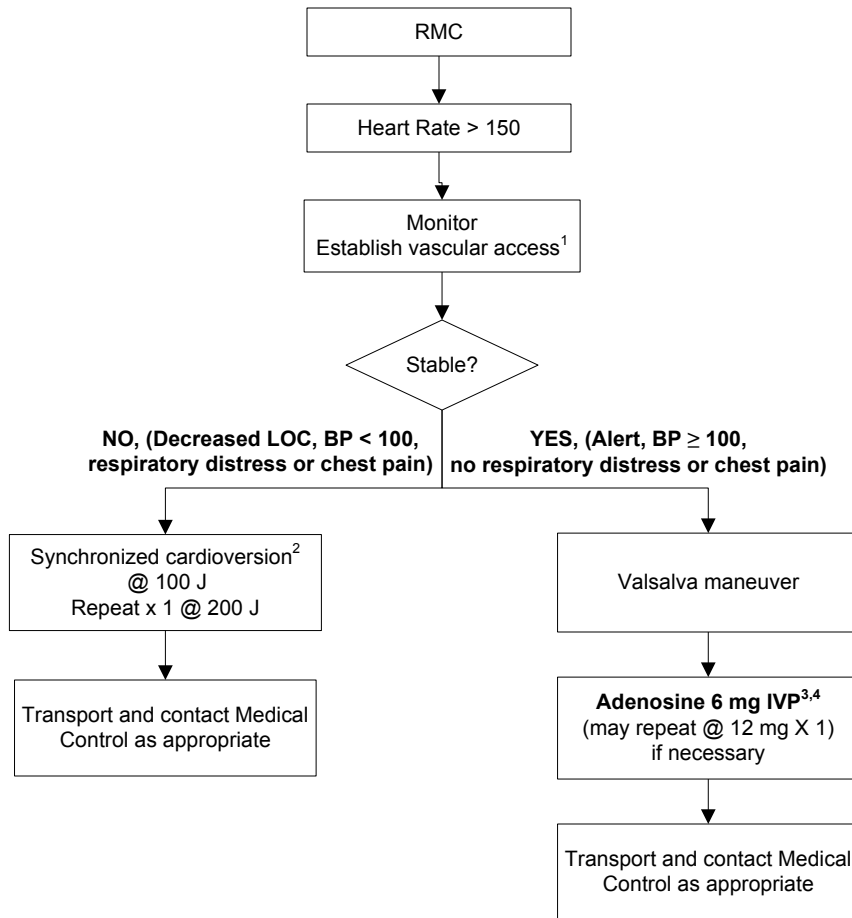


NARROW QRS COMPLEX TACHYCARDIA - ALS (Pulse >150)



1 – If unconscious, defer vascular access until after cardioversion.

2 – If conscious, consider sedation and/or analgesia prior to cardioversion: Versed 1-2 mg IVP OR Morphine Sulfate 2-5 mg IVP.

3 - Use antecubital if possible. Also, follow injection with immediate 10 ml flush of NS.

4 - If history of reactive airway/asthma/COPD, contact Base Station ECP prior to use of adenosine.