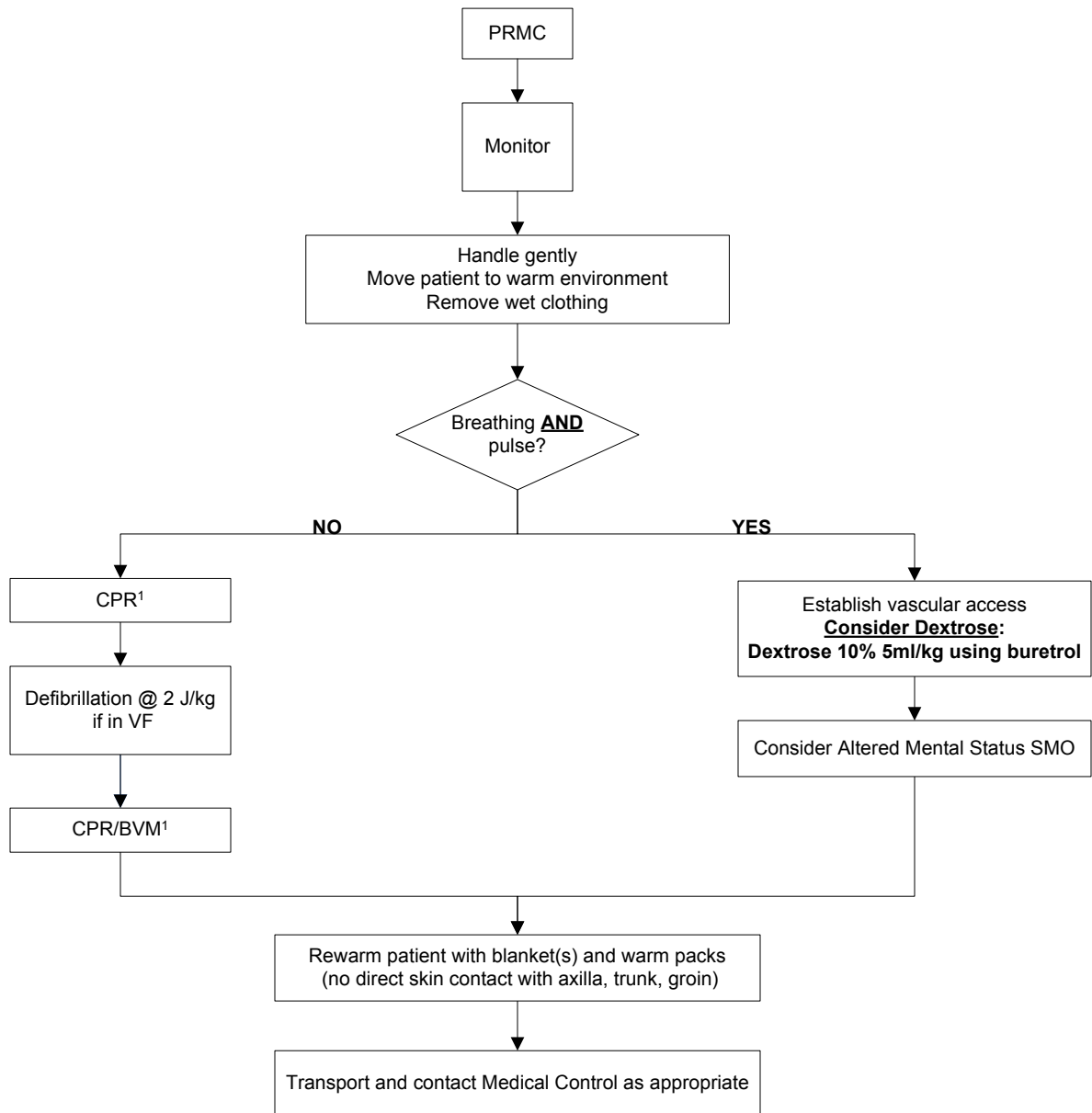


# HYPOTHERMIA - PEDIATRIC - ALS



**NOTES:** - May present with altered sensorium or as unconscious. Heart more susceptible to dysrhythmias. May have apnea, dusky or cyanotic appearance, fixed and dilated pupils; may appear without signs of life.  
 - An individual in a frozen state is not considered salvageable.  
 - The suspected hypothermic patient shall never be declared dead in the field.

**1 – Pediatric CPR rates:** 1 rescuer = 30 compressions: 2 ventilations  
 2 rescuers = 15 compressions: 2 ventilations