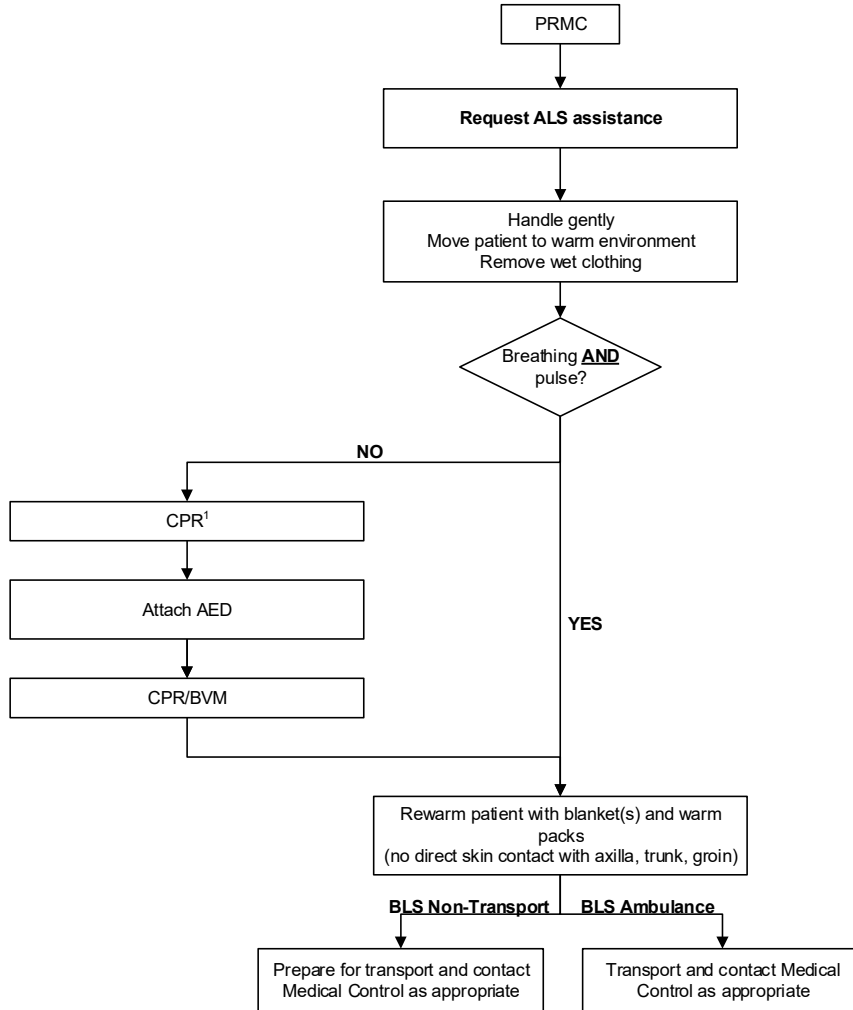




REGION 11 CHICAGO EMS SYSTEM PROTOCOL	Title: Pediatric Hypothermia / Cold Exposure - BLS
	Section: Pediatrics
	Approved: EMS Medical Directors Consortium
	Effective: March 1, 2016

PEDIATRIC HYPOTHERMIA / COLD EXPOSURE - BLS



- NOTES:**
- May present with altered sensorium or as unconscious. Heart more susceptible to dysrhythmias. May have apnea, dusky or cyanotic appearance, fixed and dilated pupils; may appear without signs of life.
 - An individual in a frozen state is not considered salvageable.
 - The suspected hypothermic patient shall never be declared dead in the field.

1 – Pediatric CPR rates: 1 rescuer = 30 compressions: 2 ventilations
2 rescuers = 15 compressions: 2 ventilations