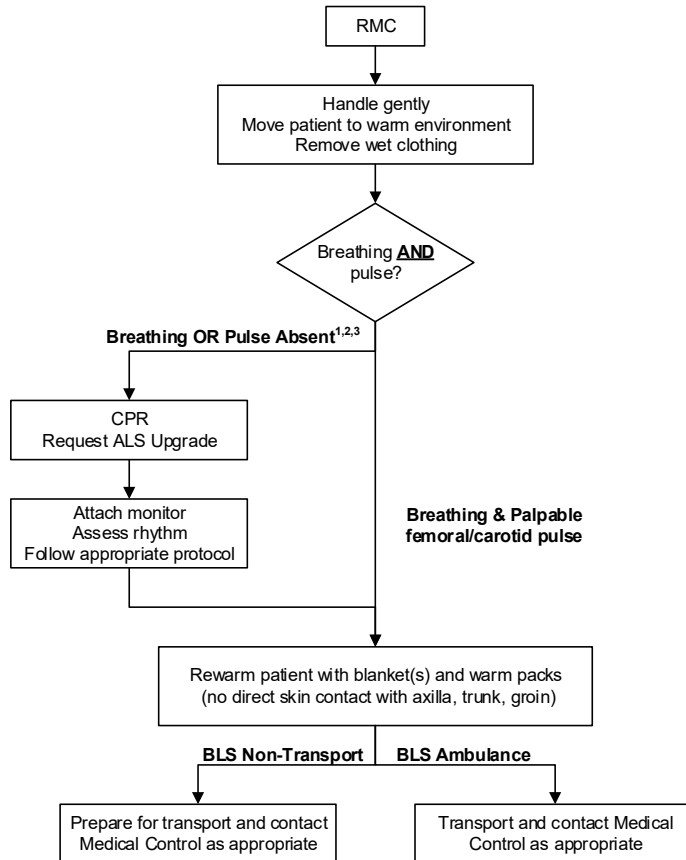




**REGION 11
CHICAGO EMS SYSTEM
PROTOCOL**

Title: Hypothermia / Cold Exposure - BLS
 Section: Toxins and Environmental
 Approved: EMS Medical Directors Consortium
 Effective: April 1, 2012

HYPOTHERMIA / COLD EXPOSURE - BLS



- 1 - May present with altered sensorium or unconscious. Heart more susceptible to dysrhythmias. May have apnea, dusky or cyanotic appearance, fixed and dilated pupils; may appear without signs of life.
- 2 - An individual in a frozen state is not considered salvageable.
- 3 - The suspected hypothermic patient shall never be declared dead in the field.