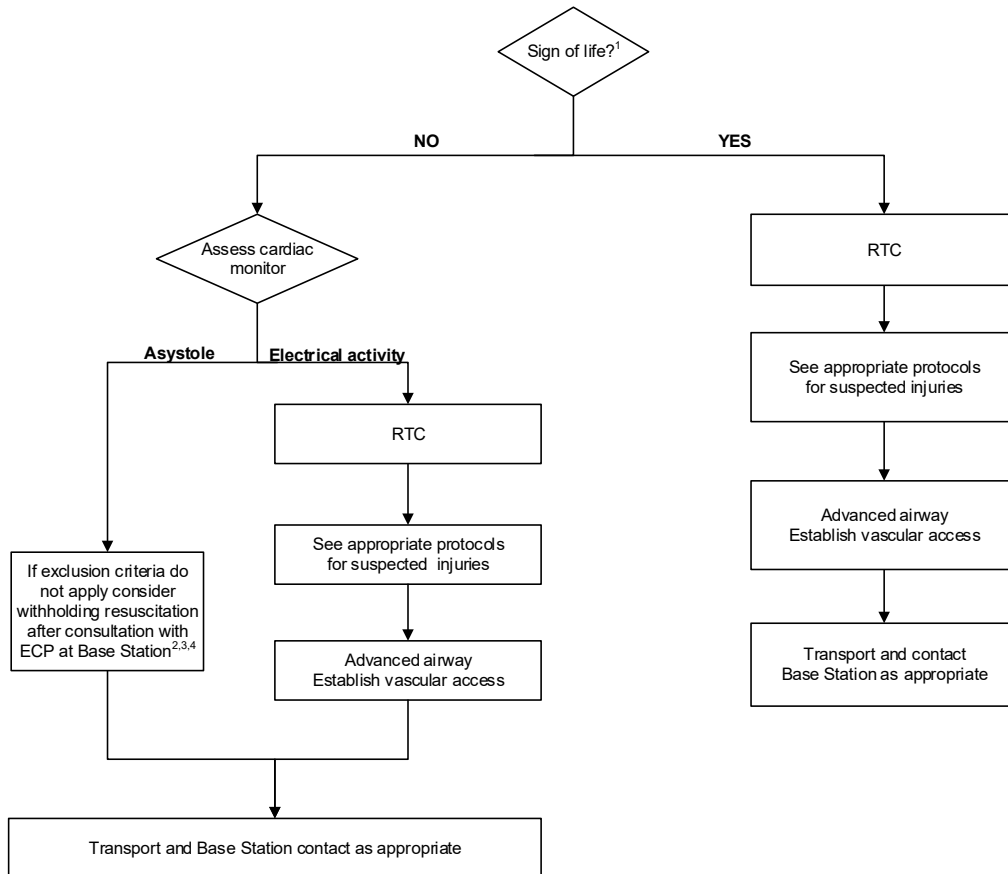




<b>REGION 11 CHICAGO EMS SYSTEM PROTOCOL</b>	Title: Traumatic Arrest - ALS
	Section: Trauma
	Approved: EMS Medical Directors Consortium
	Effective: March 1, 2016

### TRAUMATIC ARREST - ALS



- 1 - "Sign of life" is any respiration, a palpable pulse, a pupillary response, or spontaneous movement.
- 2 - Exclusion criteria: drowning or strangulation, lightning strike or electrocution, situations involving hypothermia, patients with visible pregnancy, medical conditions as the likely cause of cardiac arrest
- 3 - If EMS provider decides to continue resuscitation, the patient should be transported to the closest Level 1 trauma center.
- 4 - If the EMS provider decides to withhold resuscitation, they may choose to transport to the closest comprehensive ED for various reasons, including scene safety, unless the police declare a crime scene.