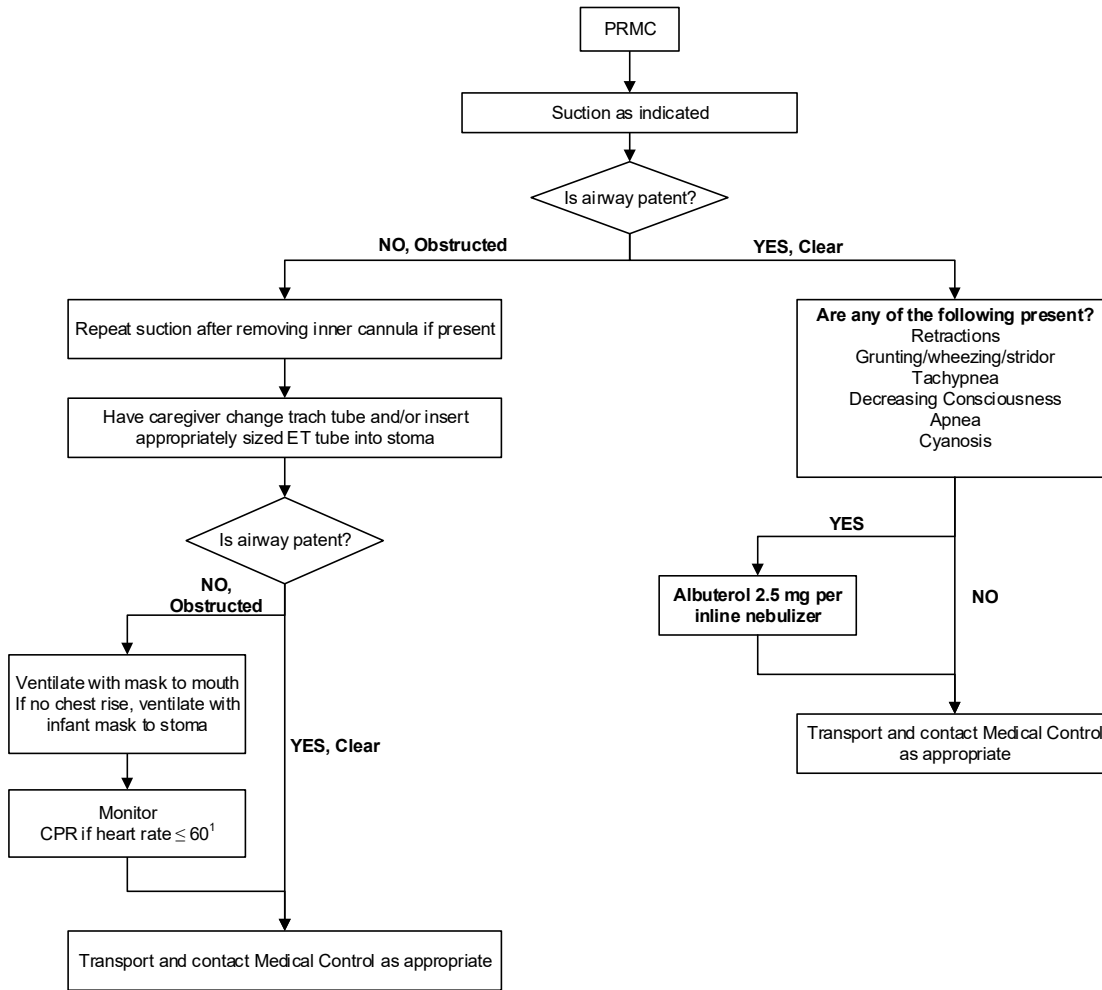




| | |
|--|---|
| REGION 11 CHICAGO EMS SYSTEM PROTOCOL | Title: Pediatric Tracheostomy with Respiratory Distress - ALS |
| | Section: Pediatrics |
| | Approved: EMS Medical Directors Consortium |
| | Effective: March 1, 2016 |

PEDIATRIC TRACHEOSTOMY WITH RESPIRATORY DISTRESS - ALS



NOTE: If chest raise inadequate using mask to stoma, consider depressing pop-off valve or switching to an adult bag to increase volume and pressure.

1 – Pediatric CPR rates: 1 rescuer = 30 compressions: 2 ventilations
2 rescuers = 15 compressions: 2 ventilations