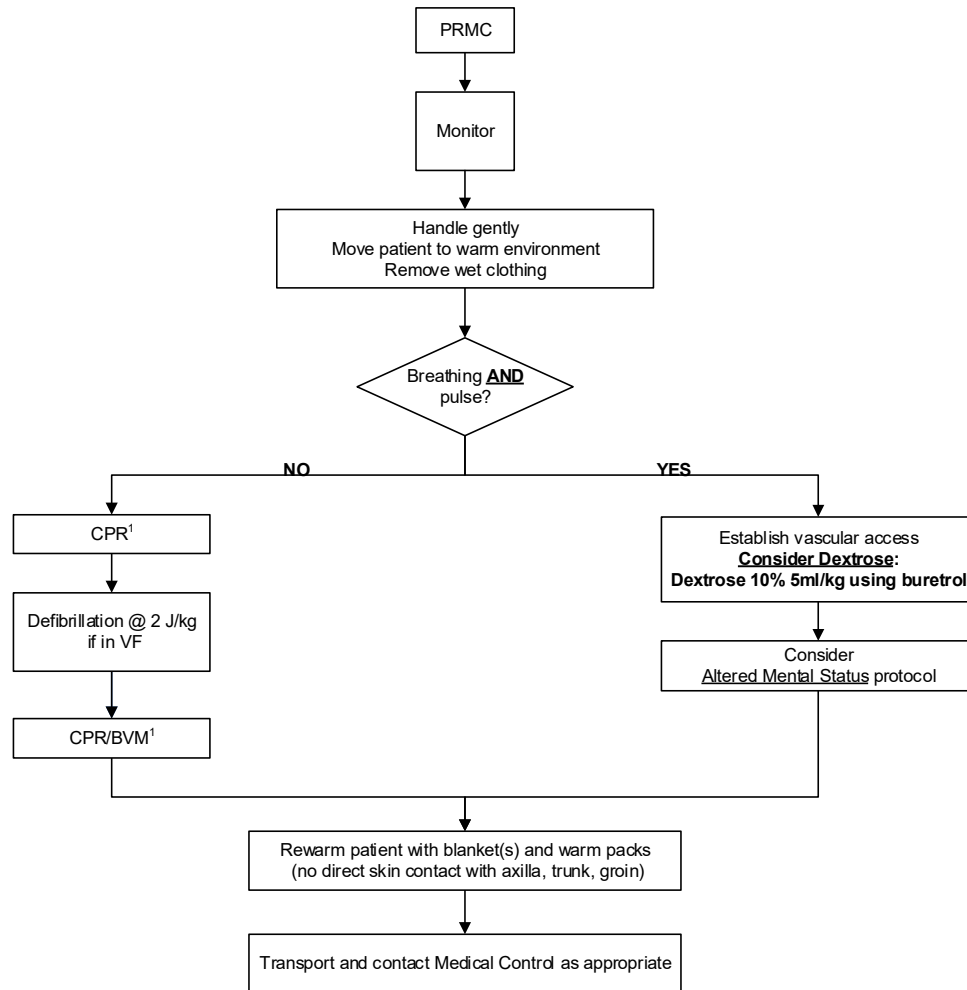




<b>REGION 11 CHICAGO EMS SYSTEM PROTOCOL</b>	Title: Pediatric Hypothermia / Cold Exposure - ALS
	Section: Pediatrics
	Approved: EMS Medical Directors Consortium
	Effective: March 1, 2016

## PEDIATRIC HYPOTHERMIA / COLD EXPOSURE - ALS



**NOTES:** - May present with altered sensorium or as unconscious. Heart more susceptible to dysrhythmias. May have apnea, dusky or cyanotic appearance, fixed and dilated pupils; may appear without signs of life.  
 - An individual in a frozen state is not considered salvageable.  
 - The suspected hypothermic patient shall never be declared dead in the field.

**1 – Pediatric CPR rates:** 1 rescuer = 30 compressions: 2 ventilations  
 2 rescuers = 15 compressions: 2 ventilations